



mid michigan  
**COMMUNITY**  
*Action*

“Helping People, Changing Lives.”

# Annual Report 2021

## “Working Together”



# Board of Directors

We utilize a unique tripartite board structure. It is composed of one-third democratically elected low-income individuals who reside in our area of service, one-third chosen from major groups and interests in the communities served, and one-third elected officials.

This means that each of our counties has three board members as well as various consultants.

## Bay County

Vaughn Begick  
William Reder, *Chair*  
Carol Goulet

## Clare County

Bronwyn Asplund  
Norm Gage, *Legal Advisor*  
Nancy Jones, *Secretary*

## Gladwin County

Joel Vernier, *Treasurer*  
Karen Moore  
Ruth Johnson

## Mecosta County

Linda Howard  
Lori Johnson

## Midland County

Steve Glaser  
Sharron Such, *Vice Chair*  
Susan Weimer

## Osceola County

Timothy Michell  
Cindy Wertz

## Head Start Policy Council Representative

Sharon Payne

## Financial Consultant

Jennifer Dancer

## Former Members

David Hoeffling  
Kathy Wilton  
Jerrilynn Strong  
Dale Orvis  
Megan Bourdow

# Executive Message



We thought that 2020 was a tough year, but 2021 seemed to be just as hard to get through. Although, once again, I saw our agency and staff reach levels I have never seen before!

The pandemic has changed our way of life, inflicted dire consequences in our communities, and challenged the strength of our collective spirit. Most importantly, it has caused us to plan better, think clearer, and act faster.

Thankfully, I am continually reminded that, despite the constant adaptations and obstacles, our communities have pulled together to get through. Pulling together, working together—concepts that are at the core of Community Action.

Our team has worked diligently with tenants and landlords alike to avert hundreds of families from being evicted. Our Weatherization program has built bridges with private contractors to increase our ability to help people's homes be warmer, more comfortable, and more affordable. Our early childhood team has worked to build even stronger relationships with our families and partners to ensure continued delivery of services. Our commodity food programs continue to provide nutritious edibles to people in need. Our housing counselors have helped many people remain in their homes. And our partnership and collaboration in Gladwin and Midland counties have helped move the recovery of those communities forward after the devastating flood.

All in all, we have had a busy year even as the pandemic remains in the forefront of our conversations. We just hope that this next year brings us positive thoughts and solutions.

Enjoy this report that highlights the amazing reach and outcomes of our programs. The undercurrent of all that good work is the unheralded efforts of our staff, volunteers, partner agencies, and community-minded businesses to build a network to lift those most in need.

We truly appreciate your ongoing support as we continue to serve people the best we can!!

Fondly,

A handwritten signature in blue ink that reads "Jill Sutton". The signature is fluid and cursive.

Jill Sutton, Executive Director



# Outreach Services

Our Outreach Department thrived in a year of rapid growth and change. Outreach has always covered a wide breadth of services. As the pandemic continues, we have taken on more programs, more funding, and more staff than ever before.

We helped over four times as many households with heat and utilities compared with last year, distributed food to hundreds of households across 10 counties, became a HUD-certified counseling agency, and so much more.

Outreach staff worked together to keep individuals and families housed, warm, fed, and safe.

## Food Commodities

33,402 monthly food boxes were distributed to seniors.

10,951 quarterly food boxes were distributed to households.

1,300,000+ pounds of food were distributed.

5,317 volunteer hours went into packing commodities boxes by individuals and families.

203 households were served through the Clare County Food Pantry.



## Heat & Utility Assistance

898 households were assisted in maintaining or reconnecting heat and utility services.

\$454,499 was distributed to households in heat and utility assistance.

# Outreach Services

## Homeless Assistance

\$302,868 was distributed to households in assistance to obtain or maintain safe and affordable housing.

92 households were staying in shelter, cars, or outside and obtained housing.

204 households were at risk of homelessness and maintained housing.

## Foreclosure Prevention

\$95,983 was distributed to homeowners for mortgage and property tax assistance.

108 households avoided foreclosure.

## Home Empowerment

789 participants attended rental, financial capability, homebuyer education, and other workshops.

25 clients received individual Housing Counseling services.

## Income Tax Preparation

Our tax preparation program received the Change Accelerator Recognition for converting an in-person program to a virtual program.

691 households received tax preparation assistance.

\$576,712 in tax returns came back into Clare, Gladwin, Mecosta, and Osceola Counties.



# Early Childhood Services

Early Childhood Services staff have learned the true meaning of working together during this past year. Stepping in and stepping up to ensure high quality services under unique situations, Early Childhood Services staff are standing strong and working together!

## Children Served

Head Start..... 220  
Early Head Start..... 246

## Families Served

Head Start..... 225  
Early Head Start..... 190

## Pregnant Women Served

Early Head Start..... 22

## Average Monthly Enrollment

Head Start..... 220  
Early Head Start..... 165/200

## Children up-to-date on a schedule of primary and preventative health care

Head Start..... 66%  
Early Head Start..... 27%

## Children completing dental exams and oral health screenings

Head Start..... 38%  
Early Head Start..... 79%

## Children up-to-date on immunizations

Head Start..... 92%  
Early Head Start..... 71%

## Children enrolled with a disability

Head Start..... 23%  
Early Head Start..... 28%

## Family Involvement

24% of Early Head Start children and their parents attended socializations.

38% of Head Start Families participated in Head Start parent meetings.

35% of Early Head Start families participated in Early Head Start family meetings.

247 Children and their families participated in collaborative events.

16 “Men in the Lives of Kids” events were held with 9 males attending.

## Program Notes

The Office of Head Start conducted a focused Area 1 review of Early Head Start and noted no material findings or deficiencies.

Mid Michigan CAA’s Early Head Start and Head Start programs are committed to school readiness. The programs have chosen curriculum that support school readiness and track child outcomes. The agency also coordinates with area public schools to facilitate smooth transitions for each child.



# Early Childhood Services

## Early Head Start

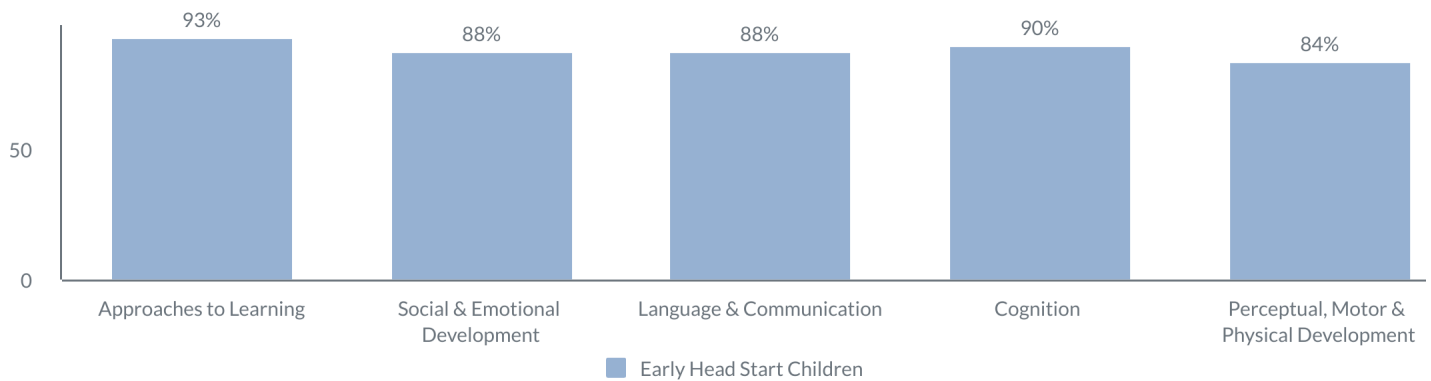
	Budget/ Allocation	Actual Expense
Personnel	\$1,389,473	\$923,463
Fringe	\$444,482	\$219,545
Travel	\$25,392	\$53,554
Equipment	\$122,447	\$58,725
Supplies	\$157,875	\$80,928
Contractual	\$146,777	\$122,444
Other	\$352,738	\$270,398
<b>Total Expenses</b>	<b>\$2,639,184</b>	<b>\$1,729,057</b>

## Head Start

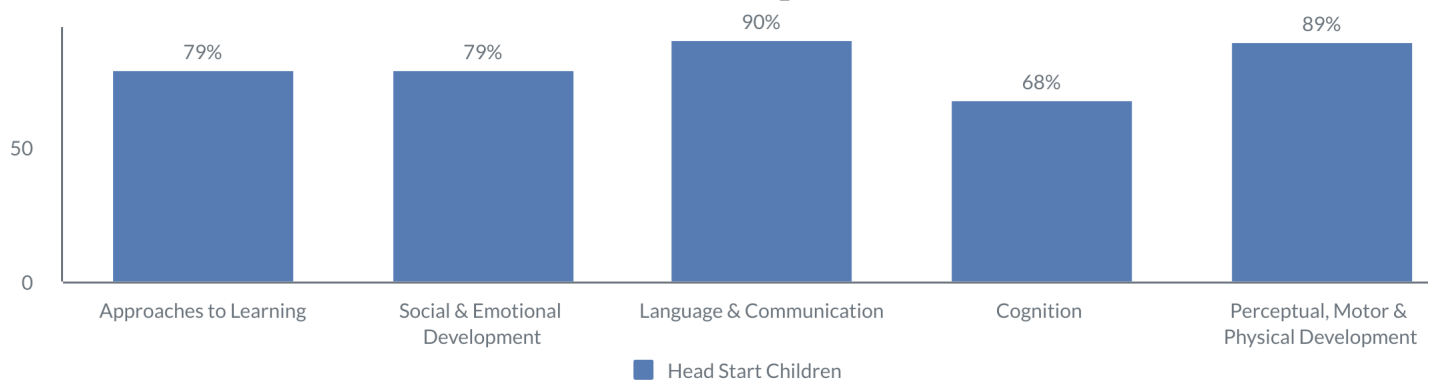
	Budget/ Allocation	Actual Expense
Personnel	\$1,317,295	\$1,129,197
Fringe	\$275,490	\$263,788
Travel	\$10,364	\$48,231
Equipment	\$24,700	\$40,634
Supplies	\$127,709	\$200,905
Contractual	\$202,513	\$138,968
Other	\$308,109	\$217,294
<b>Total Expenses</b>	<b>\$2,266,180</b>	<b>\$2,039,018</b>

## School Readiness Goals

Percentage of Early Head Start children who are meeting or exceeding school readiness goals at the end of the 2021 program



Percentage of Head Start children who are meeting or exceeding school readiness goals at the fall checkpoint





# Housing Services

Our Housing Department's mission is to make homes safer, healthier, more comfortable, and more affordable.

For households struggling with high energy costs, Weatherization provides cost-effective energy solutions like insulation and weather stripping to reduce energy costs, increase safety in the home, and improve the health of the residents. To determine which measures will be most effective, certified Energy Auditors conduct an energy audit which includes evaluating the furnace, attic, crawl space, and airflow in the home.

The Housing Preservation Grant provides funding for the repair and rehabilitation of homes allowing us to repair roofs, a service which is not available through our other funding sources.

## Weatherization Assistance Program

\$543,684 invested in local homes

\$8,238 average invested per home

66 homes were weatherized

- 27 homes with seniors
- 42 homes with people with disabilities
- 17 homes with children under 18

133 people served through weatherization services

- 30 seniors
- 50 people with disabilities
- 37 children under 18



## Housing Preservation Grant

10 households received assistance through the Housing Preservation Grant

\$77,165 was expended repairing roofs to keep residents safer and more comfortable



# COVID Emergency Rental Assistance

COVID Emergency Rental Assistance, commonly known as CERA, covers assistance for renters who are behind on rent and/or utility payments. CERA replaced the Eviction Diversion Program. In April 2021, we were funded to serve Arenac, Bay, Clare, Gladwin, Mecosta, and Osceola Counties and provide utilities assistance in Muskegon County.

As the program progressed, we increased our monthly case approval rate by over 1000%, approving 374 cases in September.

Households received **\$3,604,455** through CERA

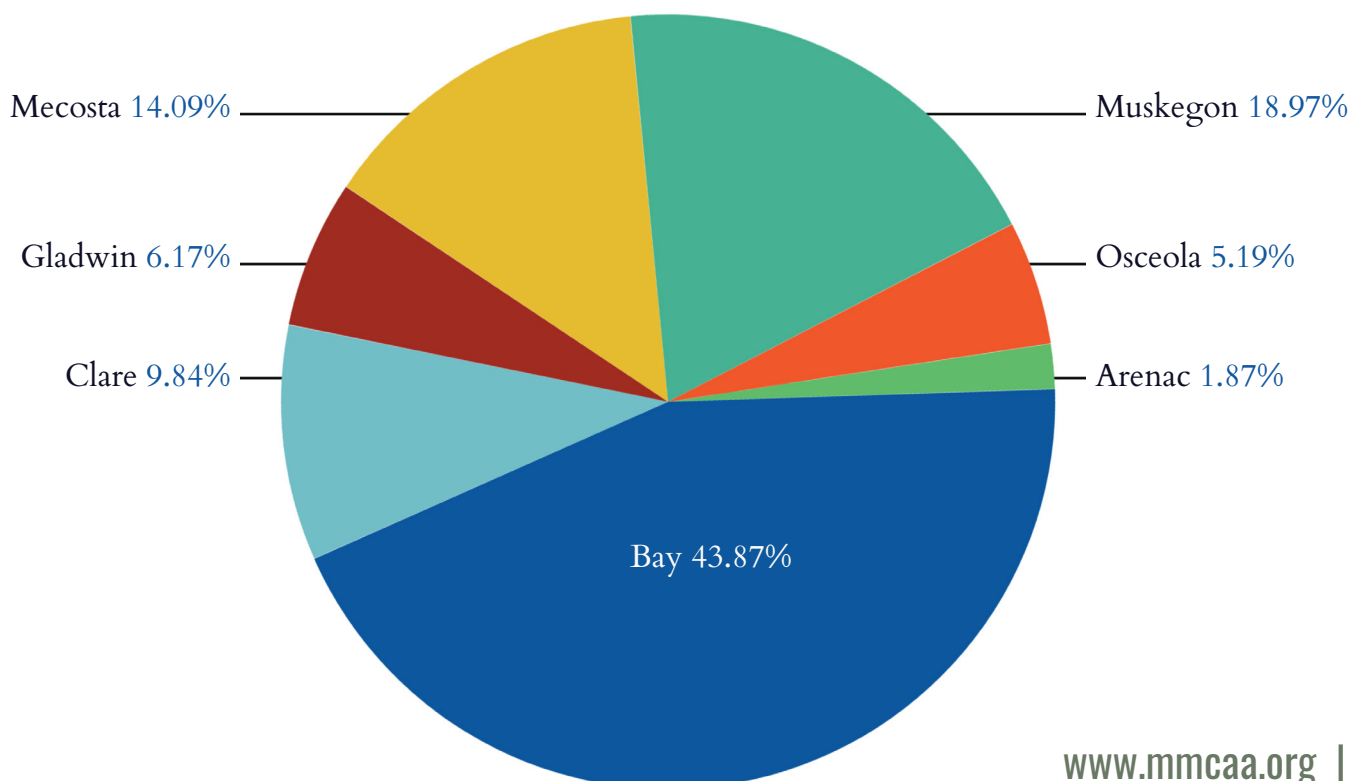
**\$2,338,707** in housing assistance

**\$1,265,748** in utility assistance

**\$3,083** was the average assistance per household

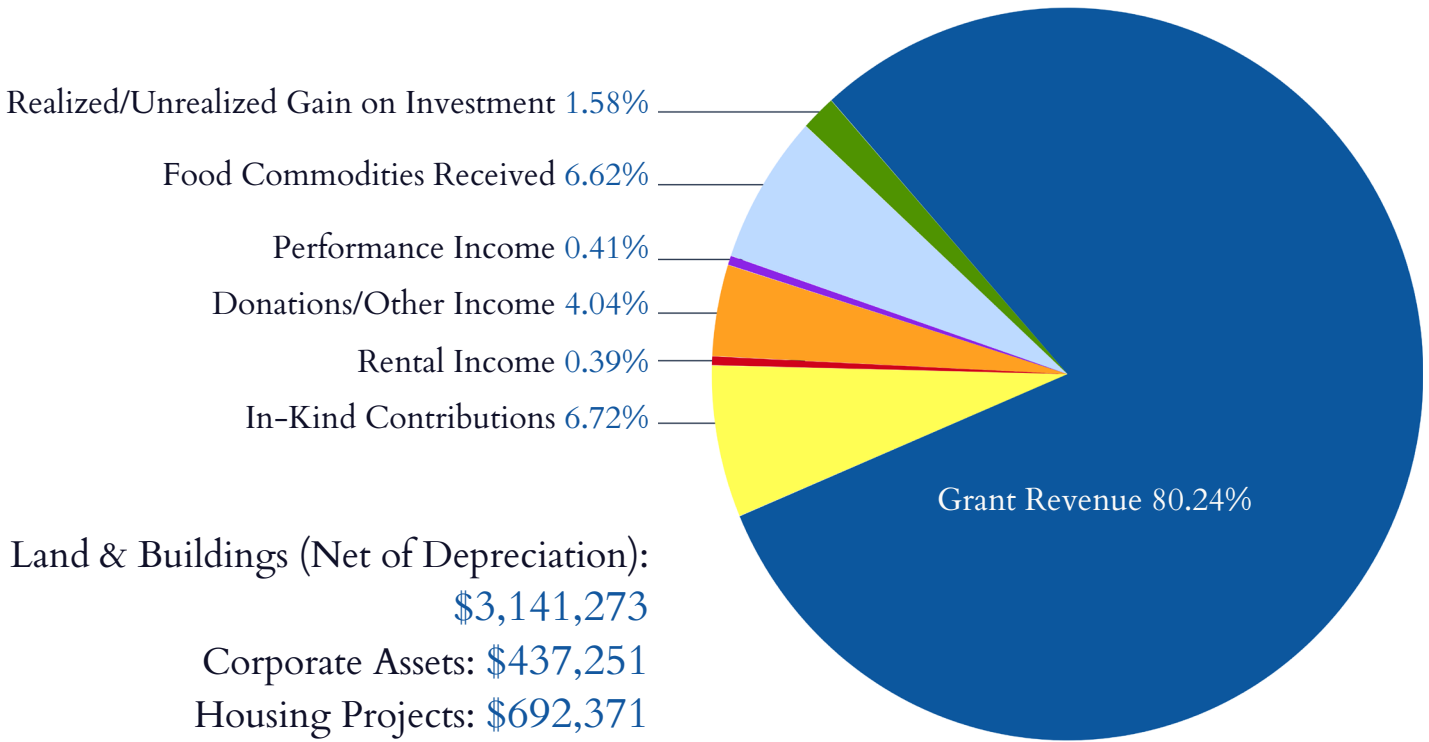
**1,169** households received assistance

## Award Distribution by County



# Fiscal Year 2021 Information

Grant Revenue	\$16,697,864
Performance Income	\$85,592
Rental Income	\$81,609
Donations/Other Income	\$816,667
Investment Income	\$15,651
Food Commodities Received	\$1,377,157
Gain on Sale of Assets	\$8,000
Realized/Unrealized Gain on Investments	\$329,815
In-Kind Contributions	\$1,398,485
<b>Total Revenue</b>	<b>\$20,810,840</b>

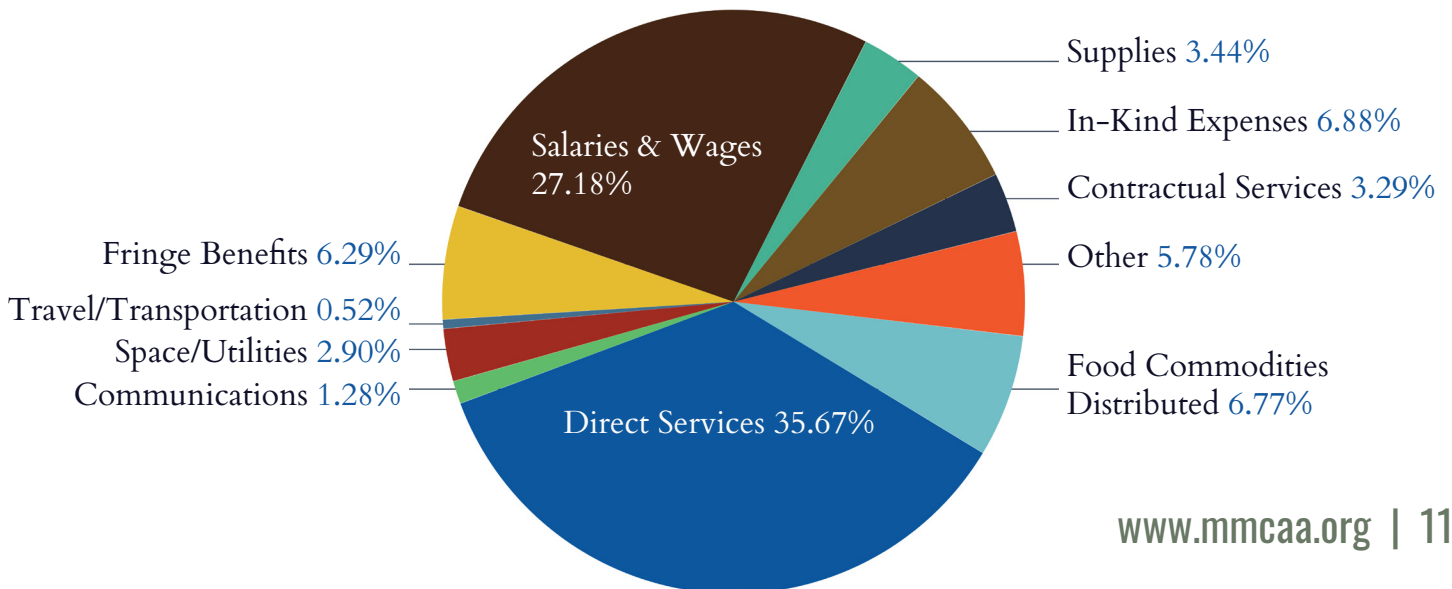


Land & Buildings (Net of Depreciation):  
 \$3,141,273  
 Corporate Assets: \$437,251  
 Housing Projects: \$692,371  
 FY Change Net Assets: \$444,174  
 End of Year Assets: \$6,336,462

# Fiscal Year 2021 Expenditures

Salaries and Wages	\$5,529,262
Fringe Benefits	\$1,278,640
Space/Utilities	\$590,120
Communications	\$259,536
Supplies	\$699,015
Travel/Transportation	\$105,192
Contractual Services	\$668,376
Direct Services	\$7,255,993
Other	\$1,175,451
Food Commodities Distributed	\$1,377,157
In-Kind Expenses	\$1,398,485
<b>Total Expenses</b>	<b>\$20,337,226</b>

<b>Total Management &amp; General Expenses</b>	<b>\$839,172</b>
<b>Total Program Expenses</b>	<b>\$19,479,028</b>
<b>Total Fundraising Expenses</b>	<b>\$19,026</b>



# Outreach

Food Warehouse  
2300 E Ludington Dr  
Clare, MI 48617  
989-386-3805

Bay County  
114 Washington Ave  
Bay City, MI 48708  
989-894-9060

Clare County  
1574 E Washington Rd  
Farwell, MI 48622  
989-386-3805

Gladwin County  
1302 Chatterton,  
Gladwin, MI 48624  
989-426-2801

Mecosta County  
14330 Northland Dr  
Big Rapids, MI 49307  
231-660-0271

Midland County  
1409 Washington St  
Midland, MI 48640  
989-832-7377

Muskegon County  
271 E Apple Ave  
Muskegon, MI 49442  
231-557-7622

Oceana County  
907 S State St #102  
Hart, MI 49420  
231-557-7622

Osceola County  
240 E Church St  
Reed City, MI 49677  
231-791-7078

# Early Childhood

Beaverton CAPS  
106 Tonkin St  
Beaverton, MI, 48612

Clare CAPS  
1574 E Washington Rd  
Farwell, MI 48622

Clare Castle  
502 Beech St  
Clare, MI 48617

Clare EHS  
2050 W Cadillac Dr  
Farwell, MI 48622

Coleman EHS  
4839 N Coleman  
Schools Rd  
Coleman, MI 48618

Farwell Preschool  
268 Ohio St  
Farwell, MI 48622

Gladwin Elementary  
600 W First St  
Gladwin, MI 48624

Gladwin CAPS/EHS  
1302 Chatterton,  
Gladwin, MI 48624

Harrison CAPS  
579 N Clare Ave  
Harrison, MI 48625

Harrison Hillside  
224 W. Main St.  
Harrison, MI 48625

Mecosta/Osceola EHS  
410 N 3rd Ave  
Big Rapids, MI 49307

Midland EHS/WIC  
Longview ECC  
337 Lemke St  
Midland, MI 48642  
989-832-7310 - WIC

# Toll Free

Administrative Office  
1-877-213-5948

EHS Registration  
1-877-386-4406

Homeless Assessment  
and Resource Agency  
(HARA)  
1-877-213-5955

WIC  
1-877-210-3169

Administrative Office  
1574 E. Washington Rd.  
PO Box 768  
Farwell, MI 48622  
(989)386-3805

[contactus@mmcaa.org](mailto:contactus@mmcaa.org)

## Connect with Us!

[@midmichigancommunityaction](https://www.instagram.com/midmichigancommunityaction)



[www.mmcaa.org](http://www.mmcaa.org)

